

# Electronic Flight Bag Airport Moving Map

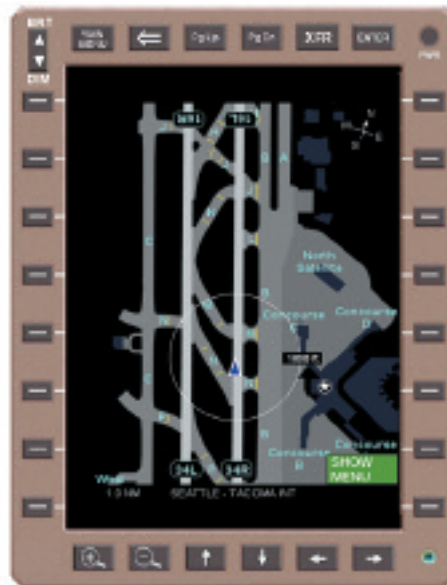


## Challenge

Runway incursions and taxi incidents are a safety concern at airports around the world. Each year, incidents cost millions of dollars and can erode the flying public's perception of the safety of flight.

## Solution

The Jeppesen Airport Moving Map (AMM) application helps orient the flight crew to the aircraft's position on the ground in relation to runways, taxiways and airport structures, without reference to paper charts. AMM improves safety and operational efficiency margins through increased position awareness and reduced flight crew workload. AMM maps are derived from satellite imagery and are geo-referenced for highly accurate representations of the airport surfaces.

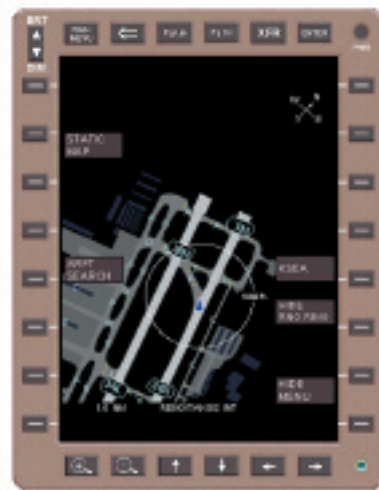
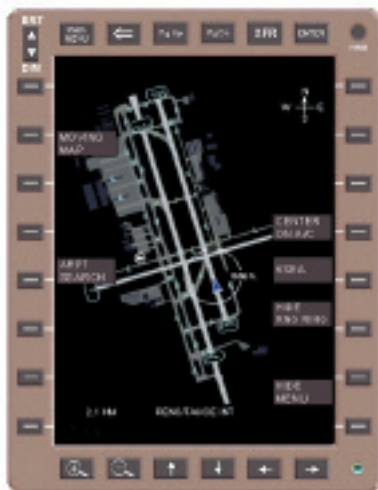


## Airport Moving Map

When the aircraft is on the ground, the Jeppesen AMM application auto-loads the appropriate airport taxi map, based on location as determined by input from the aircraft FMC or GPS signal. With the touch of a button the pilot can:

- Search and select available AMM maps.
- Display ownship position on a moving map for tactical operation, including taxiing.
- Zoom in and out on a taxiway map.
- View the AMM map in North-up, stationary mode for planning.

# Electronic Flight Bag Airport Moving Map



## Multiple Modes

**Planning mode** - AMM displays a stationary map (without ownship position) in North-up orientation. Otherwise, the planning mode will provide the same functionality as the tactical mode.

**Tactical Track-up mode** - AMM displays ownship position in the center of the screen, with aircraft position pointed toward the top of the screen. The map beneath moves and rotates as appropriate.

In each mode, the text on the moving map display maintains horizontal (read-right) orientation (except for runway identifiers, which remain oriented to their respective runway). As the map scale is changed, the text remains appropriately sized to accommodate human factors requirements. When zooming in and during movement, the identifiers of relevant runways and taxiways remain visible.

Contact Us Today!

### Western Hemisphere

Tel: 800.353.2108 | 303.328.4422

Fax: 303.328.4160

E-mail: [airlineservices@jeppesen.com](mailto:airlineservices@jeppesen.com)

### Eastern Hemisphere

Tel: +49 6102 5070

Fax: +49 6102 508283

E-mail: [FRA-CASales@jeppesen.com](mailto:FRA-CASales@jeppesen.com)

[www.jeppesen.com](http://www.jeppesen.com)

