



## **GIVE YOUR ONBOARD ELECTRONICS AN OFF-SEASON “TUNE-UP” WITH C-MAP PC-PLANNER™**

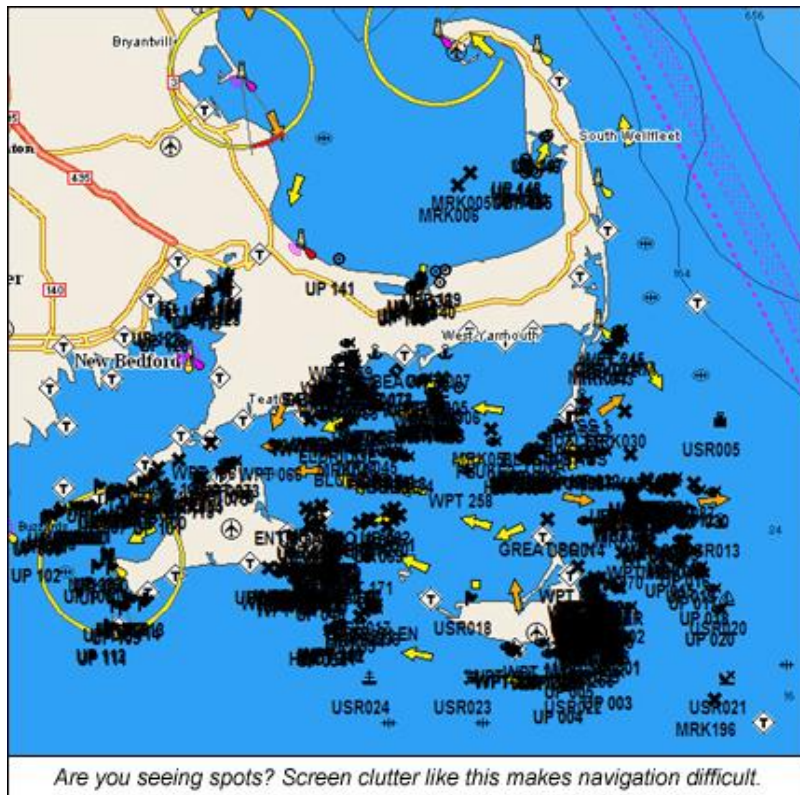
You'll Be Amazed at All You Can Do With Your PC and a  
MAX or NT+ Compatible Chart Plotter

Magazines and websites are chocked full of stories about decommissioning and winterizing your boat and engine, to ensure that you start the following season with everything “ship-shape.” Few boaters, however, read about or even know about the concept of an off-season “tune-up” for their marine electronics. That’s a shame; because it’s one of the most effective (and fun) things you can do to make the following season’s boating better.

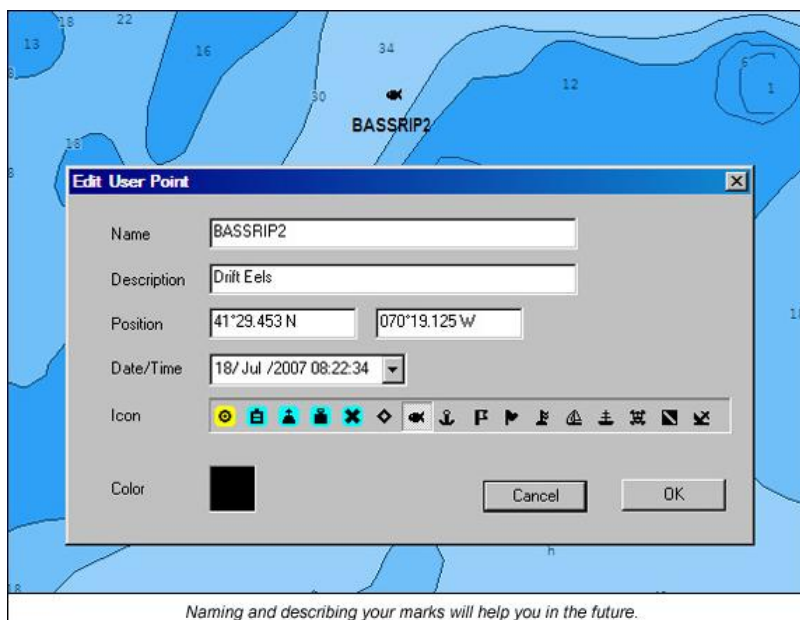
Developed by Jeppesen Marine (formerly C-Map) as a computer voyage-planning tool for sailors, power cruisers and saltwater anglers, PC-Planner opens the door to accomplishing much more. Of course, it’s great for wiling away cold winter days, planning all the navigational aspects of future vacations cruising tropical shores or trolling fish-rich waters. You can load and view your C-Map charts on your PC and create and edit marks and routes, just as you would on your chart plotter. You can view embedded aerial photos of inlets and harbors you plan to visit, check out marina facilities and layouts and even check tide and current predictions for safer and more efficient cruising. But this just scratches the surface.

Here are some other “nuts and bolts” ways PC-Planner can help streamline your fishing and cruising time next season:

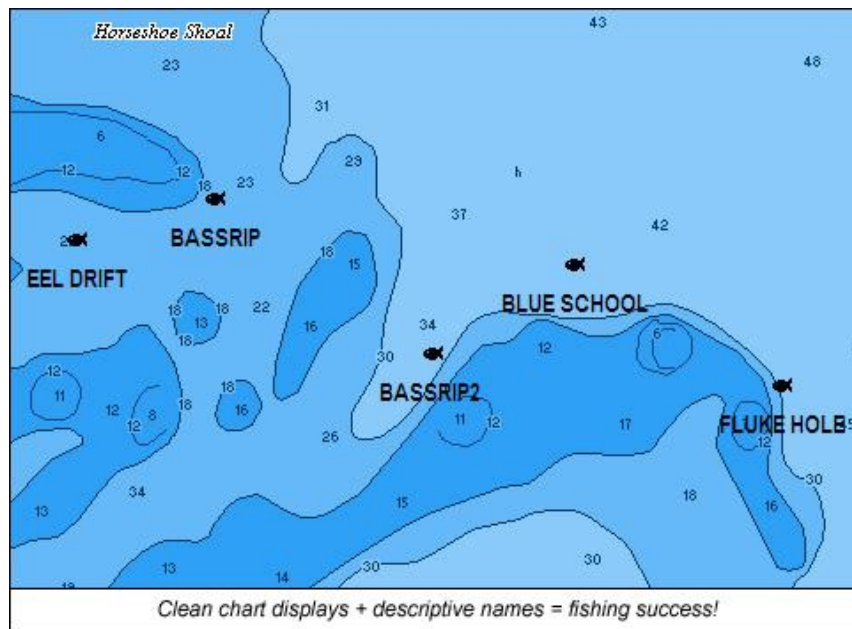
**Fishermen, Does This Sound Familiar?** You see a fish sign on the sounder, so you hit mark on the chart plotter. A little while later, you see some more signs and hit mark again. This goes on, day after day, trip after trip. Before you know it, your chart plotter display looks like one giant black spot when you zoom out! Using PC-Planner during the off season makes it easy to eliminate the clutter of old and un-needed user marks, while editing and saving those that are important.



**Go To BassRip2, Not WPT0034.** It's always better to save a user mark with a name that explains what it is and what it means. Most boaters, however, never get time to go back and edit these generic marks with names that actually make sense and will help them later. With PC-Planner, you can make use of your downtime by going through your best fishing spots, naming them and organizing them. This is also applies for anchorages, great dive spots — anywhere you want to identify for the future.



**Clean Your Screen.** PC-Planner is the ideal way to clean up screen clutter of all kinds. At your computer, in the warmth of your home or office, you can also clear out old track marks and routes, further de-cluttering your chart plotter display and opening up needed memory. When the next boating season comes, you'll enjoy the benefits, which also include an organized waypoint list that makes it easy to find what you want. Once you make the changes you want, you can use the optional memory card to easily transfer data between your computer and compatible chart plotter.



**Log Important Data.** Most chart plotters can be interfaced with your echo sounder's depth output and temperature sensor, so every mark you save can also include water depth and temperature, as well as the time of day. This is a great way to create a log of each fishing hot spot, along with important depth/temp information to help you establish a pattern for the bite. Saving this data for future reference and study using PC-Planner can help make next fishing season more productive.

**You'll do it when it's Easy.** Even though you can perform most of these "tune up" functions on your chart plotter, they're often neglected. Why? Because it's time consuming and let's face it, when you're on your boat you usually have better things to do. PC-Planner makes it easy. Rather than "navigating" through keypads and on-screen alphanumeric menus to name and edit waypoints, you can use your computer's keyboard. It's as easy as typing a letter.

**Print Out a User Point/Route Log.** Once you've finished editing your waypoints, another great feature of PC-Planner is that you can print out hard copies of these user points for safe keeping. Or if you want, you can "loan" them to a really good fishing buddy!

User Points List										
#	Icon	Color	Name	Description	Lat	Lon	Type	Date	Time	
240	<input checked="" type="checkbox"/>	█	ELDRIDGE	28 ft. depth, temp 64	41°31.857 N	070°24.933 W	Mark	08/09/2007	10:36:34	
241	<input checked="" type="checkbox"/>	█	FLUKE2	Limits - incoming	41°30.608 N	070°08.411 W	Mark	09/09/2007	08:10:33	
242	<input checked="" type="checkbox"/>	█	HANKY	Wire Troll	41°29.399 N	070°05.244 W	Mark	20/08/2007	07:45:02	
243	<input checked="" type="checkbox"/>	█	HENRY	34 ft depth, temp 66	41°19.776 N	070°29.997 W	Mark	06/08/2007	08:36:05	
244	<input checked="" type="checkbox"/>	█	HENRYO	Wreck in 27 ft	41°22.466 N	070°25.375 W	Mark	21/08/2007	01:25:34	
245	<input checked="" type="checkbox"/>	█	HOOTER	Personal Best - 42 lbs!	41°15.367 N	070°26.108 W	Mark	04/07/2007	10:18:09	
246	<input checked="" type="checkbox"/>	█	BASSRIP	Best last half outgoing	41°29.845 N	070°19.860 W	Mark	05/07/2007	06:12:22	
247	<input checked="" type="checkbox"/>	█	BASSRIP2	Drift Eels	41°29.453 N	070°19.125 W	Mark	18/07/2007	08:22:34	
248	<input checked="" type="checkbox"/>	█	BLUE SCHOOL	Slammers @ anchor - bunker	41°29.678 N	070°18.639 W	Mark	22/07/2007	10:18:01	
249	<input checked="" type="checkbox"/>	█	FLUKE HOLE	Early fall hotspot	41°29.374 N	070°17.935 W	Mark	10/09/2007	07:30:17	
250	<input checked="" type="checkbox"/>	█	ORION	44 ft. shelf - incoming	41°27.745 N	069°48.645 W	Mark	30/08/2007	07:55:09	
251	<input checked="" type="checkbox"/>	█	ORION	44 ft depth - temp 65	41°27.745 N	069°48.646 W	Mark	08/08/2007	07:36:22	
252	<input checked="" type="checkbox"/>	█	SANKATY	Short day spot	41°17.112 N	069°57.070 W	Mark	12/07/2007	09:23:00	

*An organized waypoint list helps pre-trip planning, turns your chart plotter into a powerful tool.*

**Print Out a “Chartlet.”** On the subject of printing, another great utility of PC-Planner is being able to print out a chart screen with your user points and routes overlaid on top of the chart. This is a great way to keep your own hard copy of your activities from past seasons’ trips or your favorite fishing spots. If you have a little experience with basic graphics programs, you can even paste favorite photos (like big fish) alongside these same user points on the hard copy.



**Back Up Plan.** With your computer, PC-Planner and a memory card, you can perform another very important—and often neglected—tune up service for your marine electronics. After editing and naming important waypoints — favorite fishing areas, dive spots, anchorages, etc. — you can quickly

and easily back them up and store them safely. This is also a great way to create and update a permanent digital log of your best fishing and diving spots. Backing up your user points and routes is also useful prior to updating your chart plotter's software. Most manufacturers provide updates on a routine basis, not only to fix "bugs" but also to add new features. Contact your chart plotter manufacturer for further information. If there is a software update, you can use PC-Planner to accomplish this task during the off-season.

**Have Fun.** Instead of being a chore, tuning-up your electronics and planning future trips with PC-Planner is fun. And everybody knows that prior planning makes for a smoother trip on the water, whether fishing, cruising or sailing. Organizing your fishing spots, using your C-Map charts to check out potential new ones, mapping out your big summer cruising vacation— all this is a great way to beat the winter time blues.

At only \$149 (or \$179 with memory card), PC-Planner makes a great gift and an important accessory for any avid boater. It will keep him or her busy from the time of first frost until the first robin of spring.