

Synonymous with accuracy, precision, and most of all, safety.

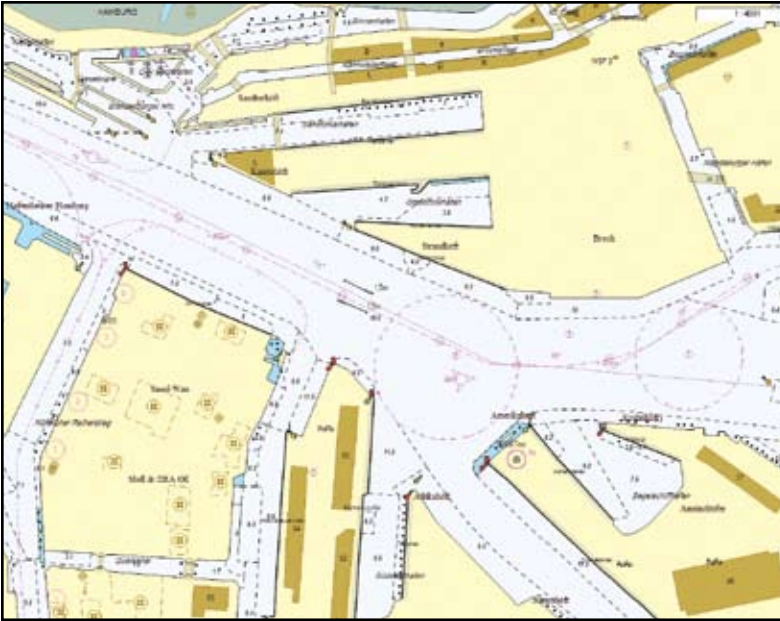
Synonymous with accuracy, precision, and most of all, safety. Through Jeppesen's aviation heritage, the company has over 70 years of valuable experience working with complex data, enhancing, assembling and packaging that data to meet the needs of customers. Importantly, the company has an active role in various working groups and committees that involve both government and civilian representatives. Jeppesen has long believed in the value and importance of strategic partnerships with industry groups and source providers, and we carry those beliefs forward with us into the marine industry.

Jeppesen Marine brings that same enthusiastic spirit of partnership to the maritime industry through our relationship with hydrographic offices around the world. Based upon relationships with over 35 hydrographic offices, we share a common goal of providing superior data solutions to mariners, whether they're on the high seas or inland waterways. We also share a common bond in improving waterway safety, increasing customer efficiency, and ensuring environmental protection.

We respect the unique role of hydrographic offices. They are sovereign creators of critical information who use the most sophisticated methods to gather and interpret data. Our focus is on ensuring that this data gets to end users in a way that maintains its integrity, quality and timeliness.

- :: Cartography Services
- :: Dkart Office Tools And Services
- :: Cm-93 Data Services And OEM Toolkits
- :: Cm-Enc Toolkit
- :: 24/7 Customer Support

Jeppesen and Hydrographic Offices



DATA SERVICES

RANGE OF DATA:

Jeppesen utilizes a range of data types including raster navigational charts, electronic navigational charts and other digital products. By applying advanced technologies, Jeppesen increases the usefulness, availability and timeliness of hydrographic office data, tightly packaging that information into systems and tools that anticipate and meet customer needs. Our aim is to deliver world-class data services.

TOOLS AND SOLUTIONS:

Customers count on Jeppesen Marine to provide them with the most innovative, reliable navigational tools and data solutions for their commercial or leisure maritime needs. We supply an extraordinarily broad range of products and services, and our electronic navigation charts are recognized by customers as being the fastest and most intelligent digital charts available. Through our global network of offices, we are able to offer unmatched customer support.

OUR SERVICES INCLUDE:

- Cartography services
- dKart office tools and services
- CM-93 data services and OEM toolkits
- CM-ENC toolkit
- 24/7 customer support

VALUED RELATIONSHIP

We value the unique contributions of hydrographic offices and are proud of our longstanding support of them. We look forward to continuing to build our strategic alliances with you, as we work together to advance the interests and welfare of mariners around the world.

FIND YOUR WAY TO JEPPESEN MARINE

We invite you to learn more about the comprehensive tools, resources and solutions we offer to support you.

Hydrographic Services
Neu-Isenburg, Germany
+49 6102 507580

Corporate Headquarters
Denver, Colorado USA
+1 303.799.9090