

JEPPESEN. ChartWatch Notice

!! URGENT !!

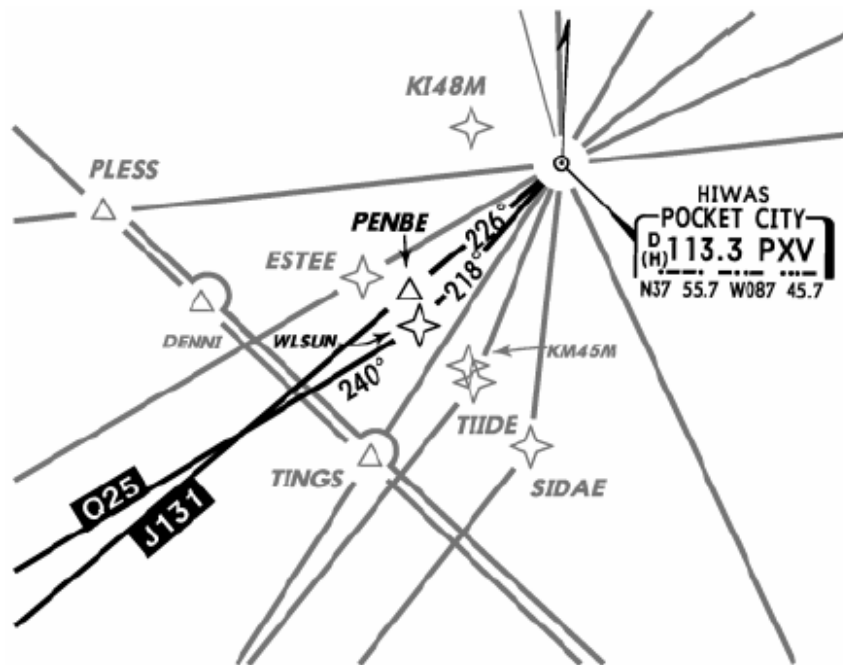
Date: 31 August 2009

Subject: Charts US (HI) 4, 5 and 7

- Misleading depiction of Jet Route J-131 bearing information from Pocket City, IN (PXV) VOR – Little Rock, AR (LIT) VOR.

Current US (HI) charts depict Jet Route J-131 bearing information using a separate ball flagged inset box. The information in this inset box is not intuitive to the actual alignment of the routes. In addition, 2 bearings (230° and 047°) have been added to the route between intermediate fixes based on Jeppesen calculations. These 2 bearings should not be used for navigation on Jet Route J-131.

THE FOLLOWING GRAPHIC REPRESENTS A MORE ACCURATE DEPICTION OF THE BEARING INFORMATION FOR J-131 AND Q-25. ALL OTHER ROUTE INFORMATION HAS BEEN INTENTIONALLY LEFT OFF.



WE STRONGLY URGE YOU TO MAKE THIS INFORMATION AVAILABLE TO APPROPRIATE CREW MEMBERS IMMEDIATELY

If you have any questions concerning this ChartWatch Notice, please contact Charting Technical Support at:

U.S. Toll Free: 1-800-353-2107 Direct: 1-303-799-9090, Extension 5830

E-mail: den.charting.techsupport@jeppesen.com

ChartWatch Notices are published to advise users of significant issues in Jeppesen chart data which may affect aircraft operations. These Notices are distributed to affected chart users and are also available on Jeppesen's Web site at www.jeppesen.com.